


LEGEND

-  PĀUATAHANUI STEAM INCLUDING EXISTING RIPARIAN CORRIDOR
-  DIRECTION OF STORM WATER FLOW/CULVERT FLOW
-  STATE HIGHWAY 58
-  STATE HIGHWAY 1 TRANSMISSION GULLY MOTORWAY
-  PROPOSED TRACK PEDESTRIAN & CYCLE TRACKS TO SHOPS AND RESIDENCES (OUT OF SCOPE - REFER TO TG DESIGN FOR MORE INFORMATION)
-  SHARED PATH CONNECTION PĀUATAHANUI STREAM CROSSING FOR SAFE ACCESS TO TOWNSHIP
-  EXISTING OVERHEAD LINES
-  11KV UNDERGROUND LINES
-  SITE ACCESS
-  MAINTENANCE TRACK & GATE
-  SPECIMEN TREES NATIVE AND EXOTIC TREE SPECIES THROUGHOUT SITE
-  PLANTING OUT OF SCOPE BANK STABILISATION AND PLANTING AS PER BRIDGE PATH WORKS
-  1 EXISTING SWALE
-  2 EXISTING PLANTED SWALE
-  3 PLANTED BUND 100% NATIVE TREE AND UNDER PLANTING TO HELP WITH SITE MITIGATION 2M WIDER X 1M HIGH
-  4 SWALE PLANTING - 100% NATIVE PLANTING
-  5 CARPARKING PLANTING - 100% PLANTING (LOW PLANTING NATIVE AND EXOTIC)
-  6 GRASSED AREAS - MOWN LAWN
-  7 NATIVE CAREX/SEDGE AREAS - 100% NATIVE SPECIES BLENDING ZONE FROM COMMERCIAL AREA TO PROPOSED WETLAND TREATMENTS
-  8 GRASSLANDS AND LOW GROWING SHRUBS - 80% NATIVE PLANTING & 20% PASTURE
-  9 LOW TO MEDIUM PLANTING ON UPPER BANK/FLATS AROUND WETLAND - 100% NATIVE SPECIES
-  10 WETLAND PLANTING ON FLAT TERRACE TO PROVIDE VISUAL/LANDSCAPE CONNECTION WITH PĀUATAHANUI INLET SALINE WETLAND - 100% NATIVE SPECIES - (FLAX & SHRUBS)
-  11 LOW LYING DEPRESSIONS PLANTED WITH WETLAND SPECIES RAUPO AND SALINE WETLAND - 10% NATIVE SPECIES - REST OPEN WATER (SEDGES & GRASSES)
-  A FIELD BUILDING
-  B OPERATIONS BUILDING
-  C STORAGE UNIT
-  D OPERATIONS BUILDING OUTDOOR PATIO AREA







12,500M<sup>2</sup> - SITE BOUNDARY

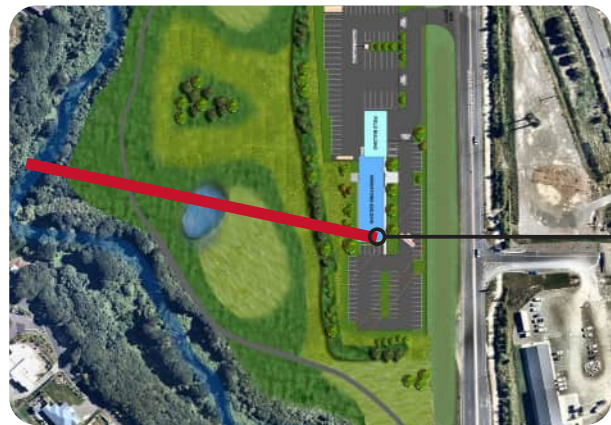
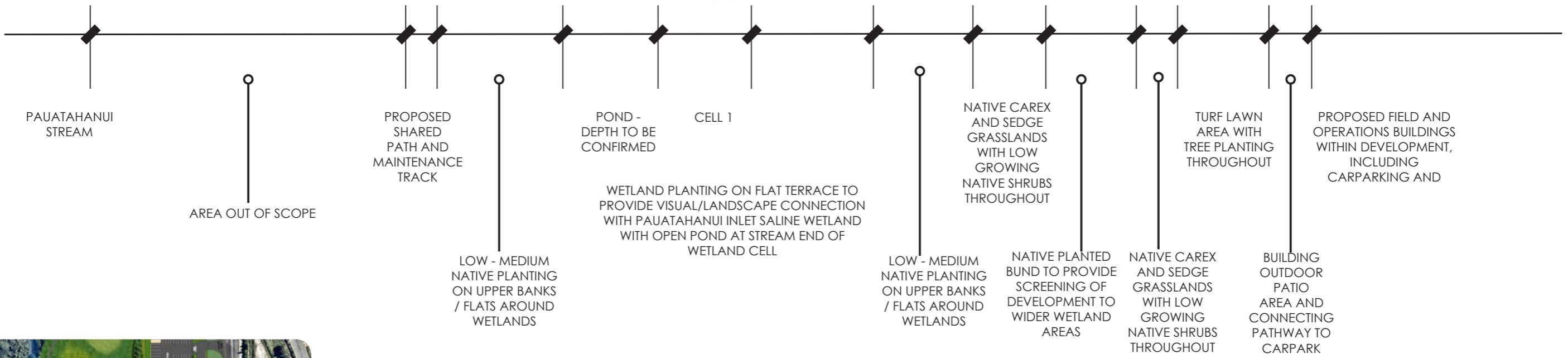
- APPROXIMATELY:
- 1,000M<sup>2</sup> BUILDING FOOTPRINT
  - 10,000M<sup>2</sup> PRIVATE CAR PARKING & UTILITIES YARD

- SECURITY - A VARIETY OF FENCING OPTIONS TO BE CONFIRMED BASED ON SITE REQUIREMENTS
  - HIGH 1.8M - 2M SECURITY FENCE AROUND MAIN COMPOUND
  - LOW POST AND CHAIN FENCE AROUND REMAINDER OF SITE

LEGEND

-  PĀUATAHANUI STEAM  
INCLUDING EXISTING RIPARIAN CORRIDOR
-  DIRECTION OF STORM WATER  
FLOW/CULVERT FLOW
-  STATE HIGHWAY 58
-  STATE HIGHWAY 1  
TRANSMISSION GULLY MOTORWAY
-  PROPOSED TRACK  
PEDESTRIAN & CYCLE TRACKS TO SHOPS AND  
RESIDENCES (OUT OF SCOPE - REFER TO TG DESIGN  
FOR MORE INFORMATION)
-  SHARED PATH CONNECTION  
PĀUATAHANUI STREAM CROSSING FOR SAFE  
ACCESS TO TOWNSHIP
-  EXISTING OVERHEAD LINES
-  11KV UNDERGROUND LINES
-  SITE ACCESS
-  SPECIMEN TREES  
NATIVE AND EXOTIC TREE SPECIES THROUGHOUT SITE
-  PLANTING OUT OF SCOPE  
BANK STABILISATION AND PLANTING AS PER BRIDGE  
PATH WORKS
-  PERIMETER FENCE CARPARK  
POOL FENCE - BLACK AT 1-1.2M
-  PERIMETER FENCE COMPOUND  
CHAIN LINK FENCE AT 1.8M HIGH
-  MAINTENANCE GATE & ACCESS  
TO WETLAND CELLS AND WIDER WETLAND ZONES.
-  STORMWATER FLOW  
ACROSS CARPARK AND INTO RAINGARDENS/SWALES
-  OUTLET PIPES  
CONNECTING SWALES AND RAINGARDENS TO TREAT  
WATER AND THEN FLOWS TO WETLAND CELLS
-  WETLAND FLOW & OUTLET  
FLOW ACROSS WETLAND AND OUT TO THE  
PĀUATAHANUI STEAM
- 1 EXISTING SWALE  
EXISTING PLANTED SWALE
- 2 PLANTED BUND  
100% NATIVE TREE AND UNDER PLANTING TO HELP  
WITH SITE MITIGATION 2M WIDER X 1M HIGH
- 3 SWALE PLANTING  
- 100% NATIVE PLANTING
- 4 CARPARKING PLANTING  
- 100% PLANTING (LOW PLANTING  
NATIVE AND EXOTIC)
- 5 GRASSED AREAS  
- MOWN LAWN
- 6 NATIVE CAREX/SEDGE AREAS  
- 100% NATIVE SPECIES BLENDING ZONE FROM  
COMMERCIAL AREA TO PROPOSED WETLAND  
TREATMENTS
- A FIELD BUILDING
- B OPERATIONS BUILDING
- C STORAGE UNIT
- D OPERATIONS BUILDING  
OUTDOOR PATIO AREA





APPROXIMATE LOCATION OF SECTION

LANES FLAT

VERSION 5  
 SEPTEMBER 2025  
 PAGE 3 OF 8  
 DESIGNED & DRAWN : M TIDBALL

INDICATIVE SECTION THROUGH LANES FLAT SITE - AT YEAR 1-2

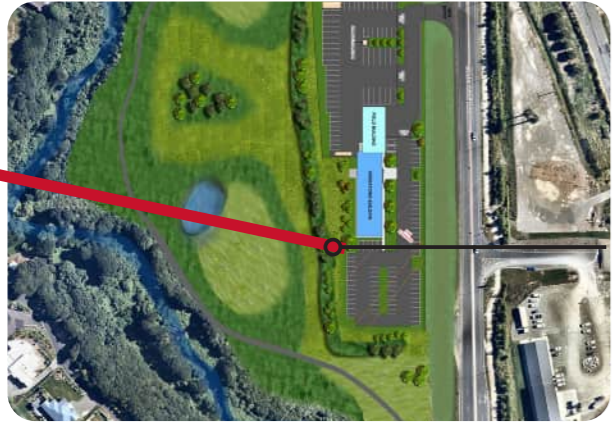
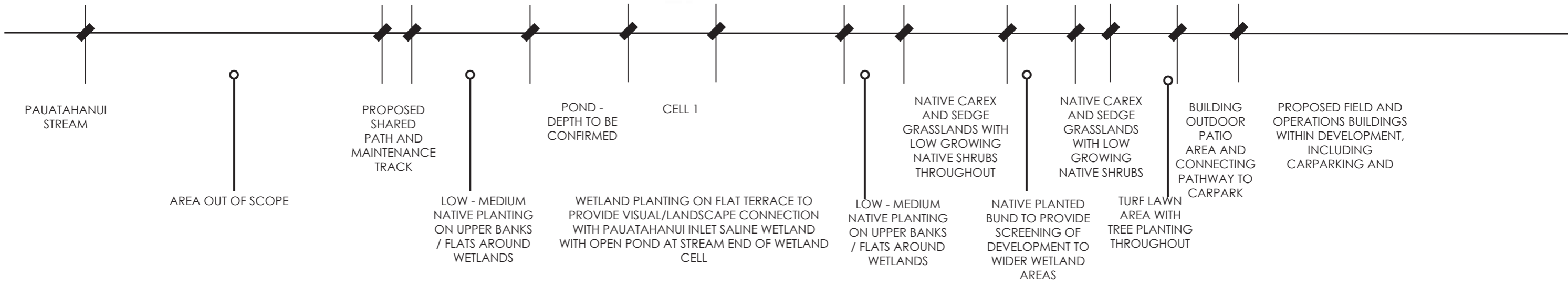
(APPROXIMATE SCALE 1:200@A3)

**ARTIST'S IMPRESSION:**  
 ALL PROPOSED PLANTING IS SHOWN  
 AT OR NEAR PLANTING





NORTH ELEVATION



APPROXIMATE LOCATION OF SECTION



*Alectryon excelsus*  
Titoki



*Cordyline australis*  
Tī kouka / Cabbage tree



*Dacrycarpus dacrydioides*  
Kahikatea



*Dacrydium cupressinum*  
Rimu (depending on availability)



*Elaeocarpus dentatus*  
Hīnau (depending on availability)



*Hoheria angustifolia*  
Lacebark



*Leptospermum scorparium*  
Mānuka



*Pseudopanax crassifolius*  
Lancewood



*Pseudopanax ferox*  
Toothed Lancewood



*Podocarpus totara*  
Tōtara



*Plagianthus regius*  
Ribbonwood



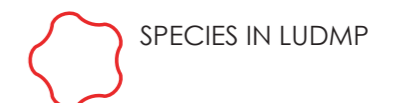
*Prumnopitys taxifolia*  
Matai (depending on availability)



*Sophora microphylla*  
Kōwhai

FINAL SPECIES TO BE CONFIRMED UPON SOIL TESTING  
AND DESIGN OF WETLAND AREA.

LEGEND



SPECIES IN LUDMP



SPECIES SUPPORTED BY IWI



*Apodasmia similis*



*Astelia grandis*



*Austroderia richardii*



*Carex maorica*



*Carex secta*  
(sparingly)



*Carex solandri*



*Carex virgata*



*Cyperus ustulatus*



*Eleocharis acuta*



*Juncus edgareae*



*Juncus sarophorus*



*Phormium tenax*



*Plagianthus divaricatus*

Specific species noted in Appendix H page 10 of the Landscape and Urban Design Management Plan (LUDMP) "Low lying depressions planted with Raupo and saline wetland species – sedges, grasses" & "Wetland planting (flax & shrubs) on flat terrace to provide visual/landscape connection with Pauatahanui Inlet saline wetland  
FINAL SPECIES TO BE CONFIRMED UPON SOIL TESTING AND DESIGN OF WETLAND AREA.

LEGEND



SPECIES IN LUDMP



SPECIES SUPPORTED BY IWI



*Anemanthele lessoniana*



*Arthropodium cirratum*



*Astelia grandis*



*Astelia fragrans*



*Carex forsteri* (depending on availability)



*Coprosma acerosa* / *Coprosma acerosa*  
'Red Rocks' (depending on availability)



*Dianella nigra*  
(depending on availability)



*Libertia ixioides*

FINAL SPECIES TO BE CONFIRMED  
UPON SOIL TESTING AND DESIGN  
OF WETLAND AREA.

LEGEND

 SPECIES IN LUDMP

 SPECIES SUPPORTED BY IWI



*Aristotelia serrata*



*Carpodetus serratus*



*Coprosma areolata*  
(depending on availability)



*Coprosma linariifolia*  
(depending on availability)



*Coprosma propinqua*



*Coprosma rhamnoides*



*Coprosma robusta*



*Coprosma rotundifolia*



*Coprosma rubra*



*Dodonaea viscosa*



*Griselinia littoralis*



*Kunzea robusta*



*Lophomyrtus obcordata*



*Melicytus ramiflorus*



*Myrsine divaricata*  
(depending on availability)



*Pennantia corymbosa*



*Pseudopanax arboreus*



*Pseudowintera colorata*




*Schefflera digitata*



*Veronica salicifolia*

FINAL SPECIES TO BE CONFIRMED  
UPON SOIL TESTING AND DESIGN  
OF WETLAND AREA.

LEGEND

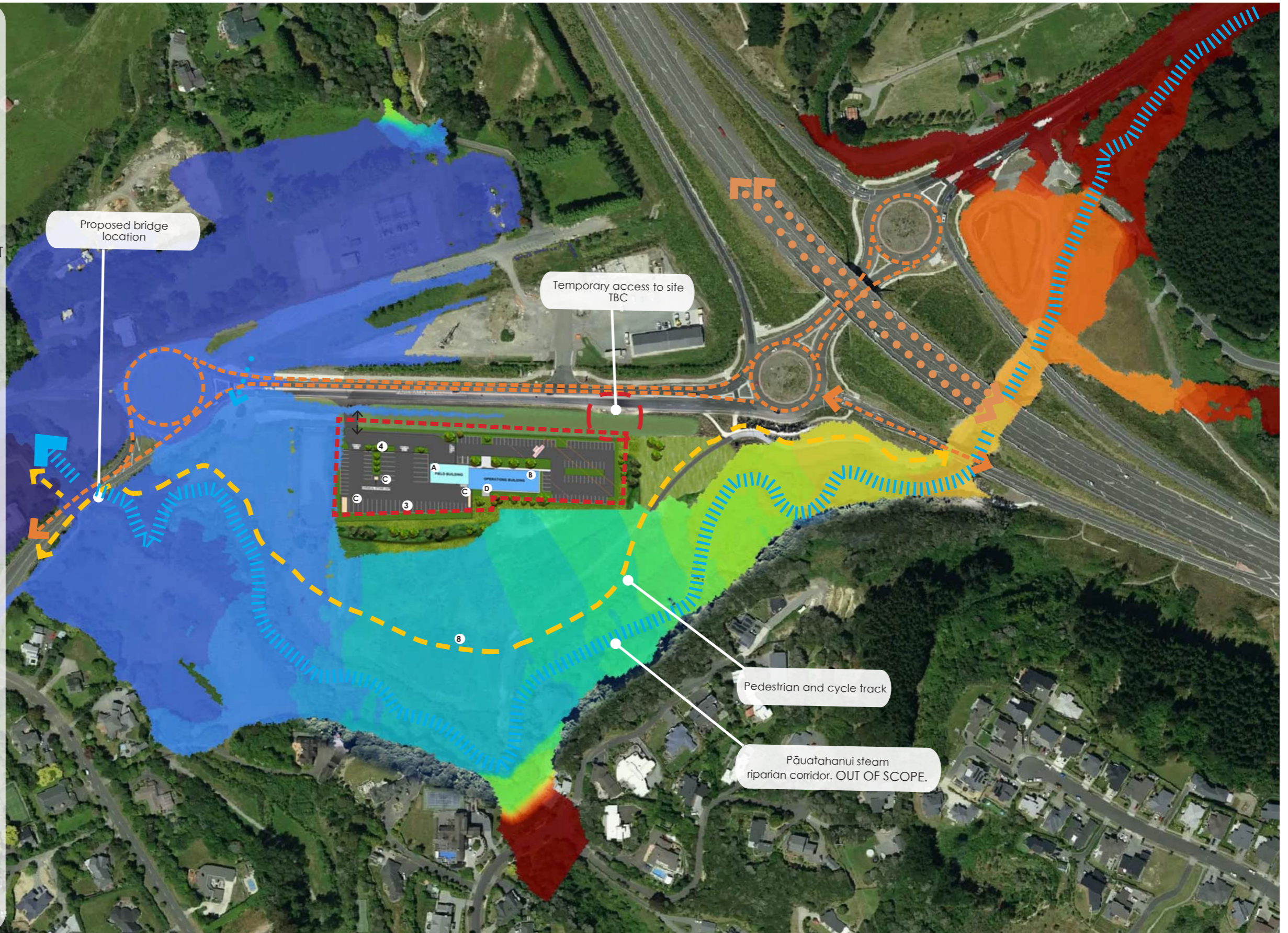
 SPECIES IN LUDMP

 SPECIES SUPPORTED BY IWI



LEGEND

- PĀUATAHANUI STEAM INCLUDING EXISTING RIPARIAN CORRIDOR
- DIRECTION OF STORM WATER FLOW/CULVERT FLOW
- STATE HIGHWAY 58
- STATE HIGHWAY 1 TRANSMISSION GULLY MOTORWAY
- PROPOSED TRACK PEDESTRIAN & CYCLE TRACKS TO SHOPS AND RESIDENCES (OUT OF SCOPE - REFER TO TG DESIGN FOR MORE INFORMATION)
- SITE ACCESS
- 100 YEAR FLOOD EXTENT WITHOUT SPOIL MOUND <=2.75
- 2.75-3
- 3-3.25
- 3.5-3.75
- 3.75-4
- 4-4.25
- 4.25-4.5
- 4.5-4.75
- 4.75-5
- 5-5.25
- 5.25-5.5
- 5.5-5.75
- 5.75-6
- 6-6.25
- 6.25-6.5
- 6.5-6.75
- 6.75-7
- 7-7.25
- 7.25-7.5
- 7.5-7.75
- >7.75
- OPERATION DEVELOPMENT AREA
- (A) FIELD BUILDING
- (B) OPERATIONS BUILDING
- (C) STORAGE UNIT
- (D) FIELD BUILDING OUTDOOR PATIO AREA



12,500M<sup>2</sup> - SITE BOUNDARY

- APPROXIMATELY:
- 1,000M<sup>2</sup> BUILDING FOOTPRINT
  - 10,000M<sup>2</sup> PRIVATE CAR PARKING & UTILITIES YARD

- SECURITY - A VARIETY OF FENCING OPTIONS TO BE CONFIRMED BASED ON SITE REQUIREMENTS
  - HIGH 1.8M - 2M SECURITY FENCE AROUND MAIN COMPOUND
  - LOW POST AND CHAIN FENCE AROUND REMAINDER OF SITE

LANES FLAT

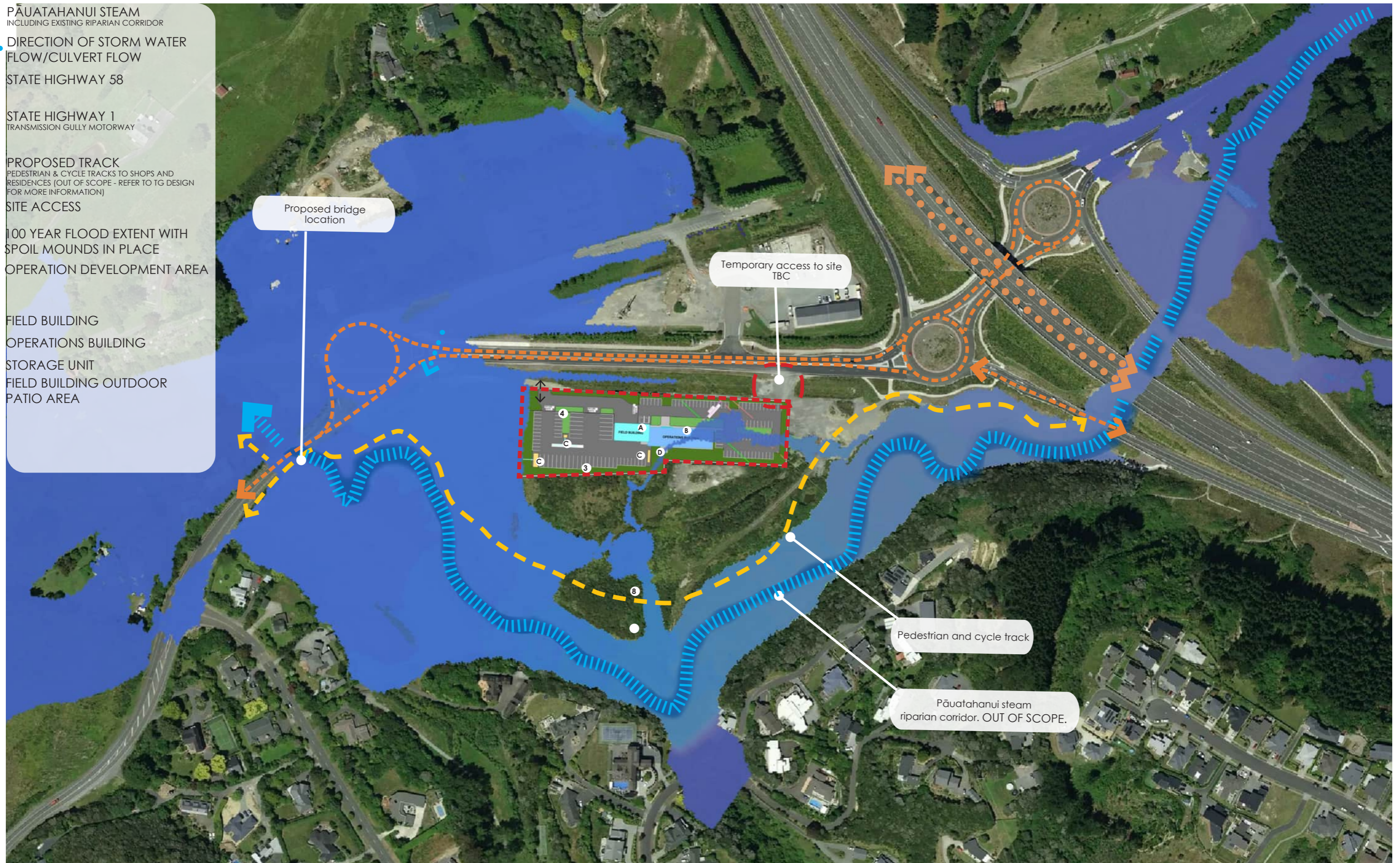
VERSION 5 - SCALE NOT TO SCALE  
 SEPTEMBER 2025  
 PAGE 5 OF 8  
 DESIGNED & DRAWN : M TIDBALL

OPERATION SITE WITH 100 YEAR FLOOD IMPACT WITHOUT SPOIL MOUNDS  
 IN PLACE



LEGEND

-  PĀUATAHANUI STEAM INCLUDING EXISTING RIPARIAN CORRIDOR
-  DIRECTION OF STORM WATER FLOW/CULVERT FLOW
-  STATE HIGHWAY 58
-  STATE HIGHWAY 1 TRANSMISSION GULLY MOTORWAY
-  PROPOSED TRACK PEDESTRIAN & CYCLE TRACKS TO SHOPS AND RESIDENCES (OUT OF SCOPE - REFER TO TG DESIGN FOR MORE INFORMATION)
-  SITE ACCESS
-  100 YEAR FLOOD EXTENT WITH SPOIL MOUNDS IN PLACE
-  OPERATION DEVELOPMENT AREA
-  (A) FIELD BUILDING
-  (B) OPERATIONS BUILDING
-  (C) STORAGE UNIT
-  (D) FIELD BUILDING OUTDOOR PATIO AREA



12,500M<sup>2</sup> - SITE BOUNDARY

APPROXIMATELY:

- 1,000M<sup>2</sup> BUILDING FOOTPRINT
- 10,000M<sup>2</sup> PRIVATE CAR PARKING & UTILITIES YARD

- SECURITY - A VARIETY OF FENCING OPTIONS TO BE CONFIRMED BASED ON SITE REQUIREMENTS
  - HIGH 1.8M - 2M SECURITY FENCE AROUND MAIN COMPOUND
  - LOW POST AND CHAIN FENCE AROUND REMAINDER OF SITE